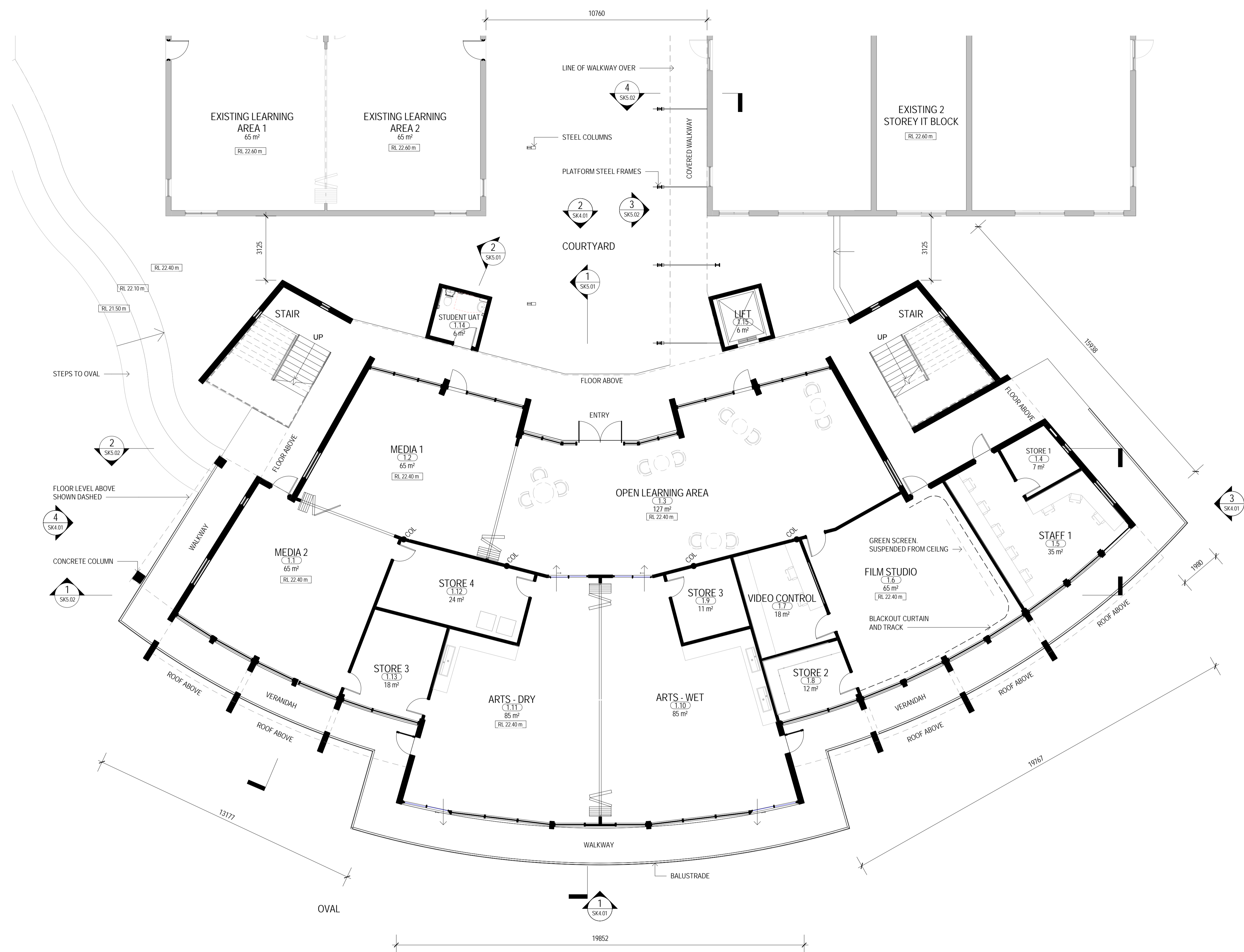


ROOM AREA SCHEDULE		
NUMBER	ROOM NAME	AREA
1.1	MEDIA 2	65 m ²
1.2	MEDIA 1	65 m ²
1.3	OPEN LEARNING AREA	127 m ²
1.4	STORE 1	7 m ²
1.5	STAFF 1	35 m ²
1.6	FILM STUDIO	65 m ²
1.7	VIDEO CONTROL	18 m ²
1.8	STORE 2	12 m ²
1.9	STORE 3	11 m ²
1.10	ARTS - WET	85 m ²
1.11	ARTS - DRY	85 m ²
1.12	STORE 4	24 m ²
1.13	STORE 3	18 m ²
1.14	STUDENT UAT	6 m ²
1.15	LIFT	6 m ²
1.15	LIFT	6 m ²
2.1	GLA 1	65 m ²
2.2	GLA 2	65 m ²
2.3	GLA 3	65 m ²
2.4	ACTIVITY / RESOURCE	204 m ²
2.5	GLA 4	65 m ²
2.6	GLA 5	65 m ²
2.7	GLA 6	65 m ²
2.8	STAFF 2	38 m ²
2.10	STAFF UAT	6 m ²
Grand total: 25		1274 m ²



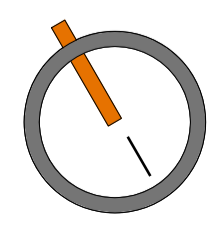
PROPOSED GROUND FLOOR PLAN

SCALE 1 : 100

EMMANUEL CATHOLIC COLLEGE - PROPOSED NEW ENGLISH & ARTS / MEDIA BLOCK & ARTS REFURBISHMENT

JOB No 1613 DATE NOVEMBER 2016

DWG No SK2.01 REV: P4



340 Hay Street Subiaco Western Australia 6008
 T +61 8 9381 6540 E enw@eiwarch.com.au
 W www.eiwarch.com.au AIN # 1090 054 672

© eiw architects

3/11/2016 3:52:15 PM